



Seizures in the School Setting

Kristen Thompson RN BSN



Objectives

Discuss new seizure classification now in use

Learn about different emergency medication options available for use in the school setting

ILAE 2017 Classification of Seizure Types Basic Version ¹

Focal Onset

Aware

Impaired
Awareness

Motor Onset
Non-Motor Onset

focal to bilateral tonic-clonic

Generalized Onset

Motor

Tonic-clonic
Other motor

Non-Motor (Absence)

Unknown Onset

Motor

Tonic-clonic
Other motor

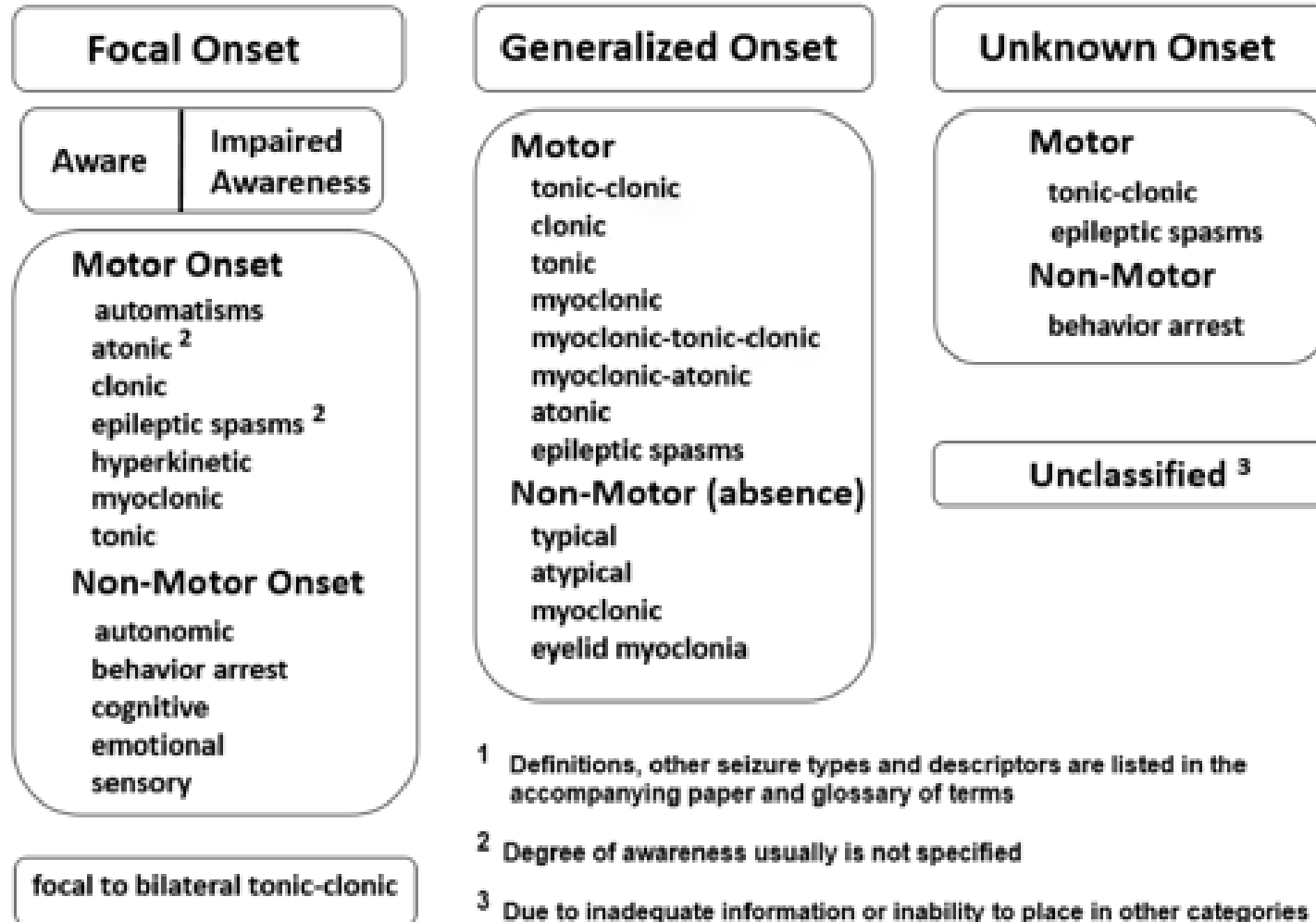
Non-Motor

Unclassified ²

¹ Definitions, other seizure types and descriptors are listed in the accompanying paper & glossary of terms

² Due to inadequate information or inability to place in other categories

ILAE 2017 Classification of Seizure Types Expanded Version ¹



¹ Definitions, other seizure types and descriptors are listed in the accompanying paper and glossary of terms

² Degree of awareness usually is not specified

³ Due to inadequate information or inability to place in other categories

Emergency Seizure Treatment Options

Diastat

- Watch for decreased respiratory rate

Nasal Versed

- Only prefilled syringes can be delegated

Sublingual/Buccal Klonopin

- Sitting position
- Do not use with open sores/irritation of gums or mucus membranes

Sublingual/Buccal Ativan

- Sitting position
- Do not use with open sores/irritation of gums or mucus membranes

VNS with magnet

- Remember to watch distances from electromagnetic fields

What about Medical Marijuana?

- NASN 2019 position statement "only FDA approved cannabis/ marijuana medications be allowed in the school setting"
- Epidiolex is FDA approved for ages 2 and up for Lennox Gastaut syndrome and Dravet syndrome
- WV Office of Medical Cannabis is working to establish rules and regulations for medical marijuana



References

- Department of Health and Human Resources (2019). Office of Medical Marijuana. Retrieved from <https://dhhr.wv.gov/bph/Pages/Medical-Cannabis-Program.aspx>
- Fisher et al. (2017) Instruction manual for the ILAE 2017 operational classification of seizure types. Retrieved from Epilepsia doi: 10.1111/epi.13671.
- National Association of School Nurses (2019). Position Brief- Cannabis/Marijuana. Retrieved from <https://www.nasn.org/advocacy/professional-practice-documents/positionbriefs/pb-cannabis>
- U.S. Food and Drug Administration (2018). FDA approves first drug comprised of an active ingredient derived from marijuana to treat rare, severe forms of epilepsy. Retrieved from <https://www.fda.gov/news-events/press-announcements/fda-approves-first-drug-comprised-active-ingredient-derived-marijuana-treat-rare-severe-forms>
- WV Council of School Nurses (2018). *WV Basic and Specialized Health Care Procedure Manual*. WV Department of Education.